

HOW TO INSTALL YOUR

**NO tools required.
Quick installation.**

**Easy to follow
step-by-step
instructions**

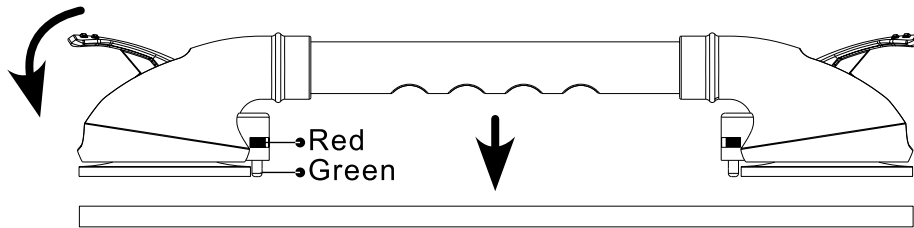


16" SUCTION CUP BALANCE ASSIST BAR

Item # 8216B-R, 8216N-R

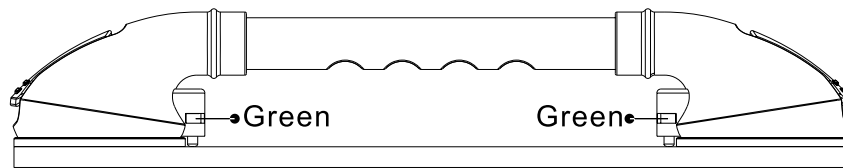


1



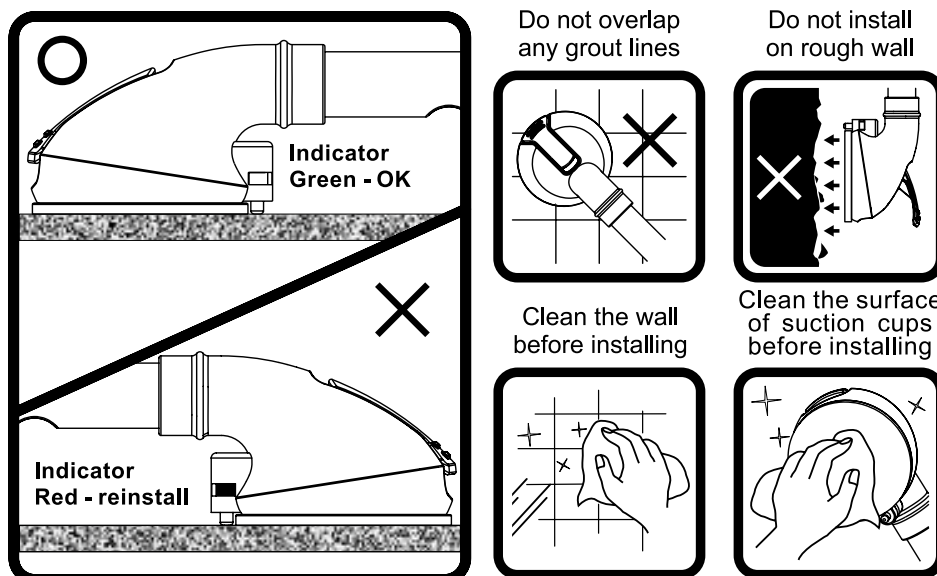
Before installing, check the suction cups to ensure they are clean from any debris. Lift the tabs and position the Suction Cup Balance Assist Bar on a flat, clean, smooth, and dry surface.

2



After positioning the bar, press the bar against the surface. When indicators change from red to green, press the tabs to secure it into place. The bar is now properly fastened.

After installing, please test the Suction Cup Balance Assist Bar by applying adequate pressure by hand to ensure it is fixed on the surface. If not, reinstall it.



WARNING

Read all instructions carefully before use. Failure to do so may result in serious injury. **NOVA Medical Products shall have no liability for any damage or injury resulting from improper installation or use of this product.**

- Read **ALL** instructions before installation.
- The Suction Cup Balance Assist Bar requires 5"x5" of smooth, non-porous tile space.
- **DO NOT** overlap any grout lines. Doing so will weaken or negate the suction of the product.
- **DO NOT** use on painted surfaces, such as drywall.
- Max Load: 143 lbs
- Check before each use that Suction Cup Balance Assist Bar is securely mounted. Reinstall if necessary.

CARE AND MAINTENANCE

Check regularly to make sure the suction cups are fully engaged and secure before every use. Use a mild detergent and warm water to clean.

WARRANTY INFORMATION

NOVA stands firm on our commitment to providing the highest quality products, as well as exceptional service. This product was built to precise standards and thoroughly inspected prior to shipment. This warranty represents our confidence in the materials and workmanship of our product.

NOVA extends this warranty only to the original purchaser of this product. The warranty does not extend to any subsequent purchaser or owner. The warranty is void upon any sale or transfer of ownership or use by other person. NOVA warrants its products are free from defects in material and workmanship under NORMAL use for the period commencing upon the date of purchase and continuing for the following specified period of time after that date:

Metal Frame	Limited Lifetime Warranty
Non-Metal/Metal parts	One Year Limited Warranty (rubber tips, plastic or metal hardware)

This warranty does not cover problems due to user negligence, misuse of the product, failure to adhere to product instructions, or normal wear and tear. Items that have been subject to negligent abuse, modified without prior written authorization are not covered within this warranty.

For warranty service, please contact the dealer from whom you purchased your NOVA product. In the event that you do not receive satisfactory service, please call us directly at the number on the bottom front of this sheet. Be prepared to indicate, the nature of the defect, the product serial number, and the name and location of where you purchased the product. You will also be required to provide a receipt of your purchase. Do not return any products to our office without prior consent.

Repair or replacement is the only remedy under this limited warranty. This warranty does not include any labor or shipping charges incurred in replacement part installation or repair of product.

THIS WARRANTY IS EXCLUSIVE AND IN LIEU OF ALL OTHER EXPRESS WARRANTIES, IMPLIED WARRANTIES, IF ANY, INCLUDING THE IMPLIED WARRANTIES OF MERCHANTABILITY AND FITNESS FOR A PARTICULAR PURPOSE. NOVA SHALL NOT BE LIABLE FOR ANY SEQUENTIAL OR INCIDENTAL DAMAGES WHATSOEVER.

Regular cleaning is recommended. Use a non-abrasive cleaner or detergent, rinse with warm water and dry completely. Abrasive cloths may damage the surface. Regularly inspect your item and its parts for any corrosion, breakage, compression or wear.

IMPORTANT WARNING

FOLLOW ALL DIRECTIONS CAREFULLY BEFORE USE. FAILURE TO DO SO MAY RESULT IN SERIOUS INJURY.

CONTACT US!
We're here to help

 info@novajoy.com
 1 800 557 6682

CARE • QUALITY • INNOVATION



THE **NOVA** PROMISE

Connect with us!
novajoy.com
facebook: [novamedicalprod](#)
twitter: [novamedicalprod](#)
twitter: [novawalkerstalk](#)
YouTube: [NOVA Medical Products](#)